

Draft recommendations on the new electoral arrangements for Bristol City Council

Summary report

Read the full report, view detailed maps and have your say at: www.consultation.lgbce.org.uk

Find out more at: www.lgbce.org.uk

Follow us on Twitter at: @LGBCE

Who we are

The Local Government Boundary Commission for England is an independent body set up by Parliament. We are not part of government or any political party. We are accountable to Parliament through a committee of MPs chaired by the Speaker of the House of Commons.

Our main role is to carry out electoral reviews of local authorities throughout England.

Electoral review

An electoral review examines and proposes new electoral arrangements for a local authority. A local authority's electoral arrangements are:

- The total number of councillors representing the council's voters ('council size').
- The names, number and boundaries of wards or electoral divisions.
- The number of councillors representing each ward or division.

Why Bristol?

The Commission is carrying out an electoral review of Bristol City Council following a request from the Mayor of Bristol for a review to improve electoral equality for local voters as well as considering the total number of councillors elected to the council in future. Bristol City Council currently has relatively high levels of electoral inequality where some councillors represent many more, or many fewer, voters than other elected members in the city. The electoral review will re-draw ward boundaries to correct the imbalances.

Our proposals

Bristol City Council currently has 70 councillors. We propose that the council should continue to have 70 councillors in future. The Commission believes that a council size of 70 members will ensure the council can discharge its roles and responsibilities effectively and provides for a warding pattern that meets our statutory criteria.

Electoral arrangements

Our draft recommendations propose that Bristol's 70 councillors should represent four single-member wards, 27 two-member wards and four three-member wards across the city.

**You have until 16 February 2015 to
have your say on the recommendations**

Stage of review	Description
22 Jul - 29 Sep 2014	Public consultation on new ward boundaries
9 Dec 2014 - 16 Feb 2015	Public consultation on draft recommendations for new electoral arrangements
12 May 2015	Publication of final recommendations by the Commission
May 2016	Subject to parliamentary approval - implementation of new arrangements at local elections

Helping you to have your say:

We are now consulting local people on a new pattern of wards for Bristol. The Commission has an open mind about its final recommendations and will consider every piece of evidence we receive from local groups and people. Every representation will be considered, regardless of whom it is from or whether it relates to the whole city or just a part of it.

If you agree with our recommendations, please let us know. If you don't think our recommendations are right for Bristol, we want to hear alternative proposals for a different pattern of wards.

The Commission aims to propose a pattern of wards for Bristol which delivers:

- **Electoral equality:** each councillor represents a similar number of voters.
- **Community identity:** reflects the identity and interests of local communities.
- **Effective and convenient local government:** helping your council discharge its responsibilities effectively.

A good pattern of wards should:

- Provide good electoral equality, with each councillor representing, as closely as possible, the same number of voters.
- Reflect community interests and identities and include evidence of community links.
- Be based on strong, easily identifiable boundaries.
- Help the council deliver effective and convenient local government.

Electoral equality:

- Does your proposal mean that councillors would represent roughly the same number of voters as elsewhere in the council area?

Have your say by writing to:

Review Officer (Bristol)
LGBCE
Layden House
76-86 Turnmill Street
London EC1M 5LG

Through our consultation area:

www.consultation.lgbce.org.uk
or by email to: reviews@lgbce.org.uk

The full report and interactive maps are available to view at www.lgbce.org.uk

Follow us on Twitter: @LGBCE

Community identity:

- **Transport links:** are there good links across your proposed ward? Is there any form of public transport?
- **Community groups:** is there a parish council, residents association or another group that represents the area?
- **Facilities:** does your pattern of wards reflect where local people go for shops, medical services, leisure facilities etc?
- **Interests:** what issues bind the community together or separate it from other parts of your area?
- **Identifiable boundaries:** are there natural or constructed features which make strong boundaries for your proposals?

Effective local government:

- Are any of the proposed wards too large or small to be represented effectively?
- Are the proposed names of the wards appropriate?

Useful tips:

- Our website has a special consultation area where you can explore the maps and draw your own proposed boundaries. You can find it at www.consultation.lgbce.org.uk.
- We publish all submissions we receive on our website so you can follow what other people and organisations have told us. Go to: www.lgbce.org.uk


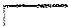
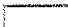
Overview of draft recommendations for Bristol City Council

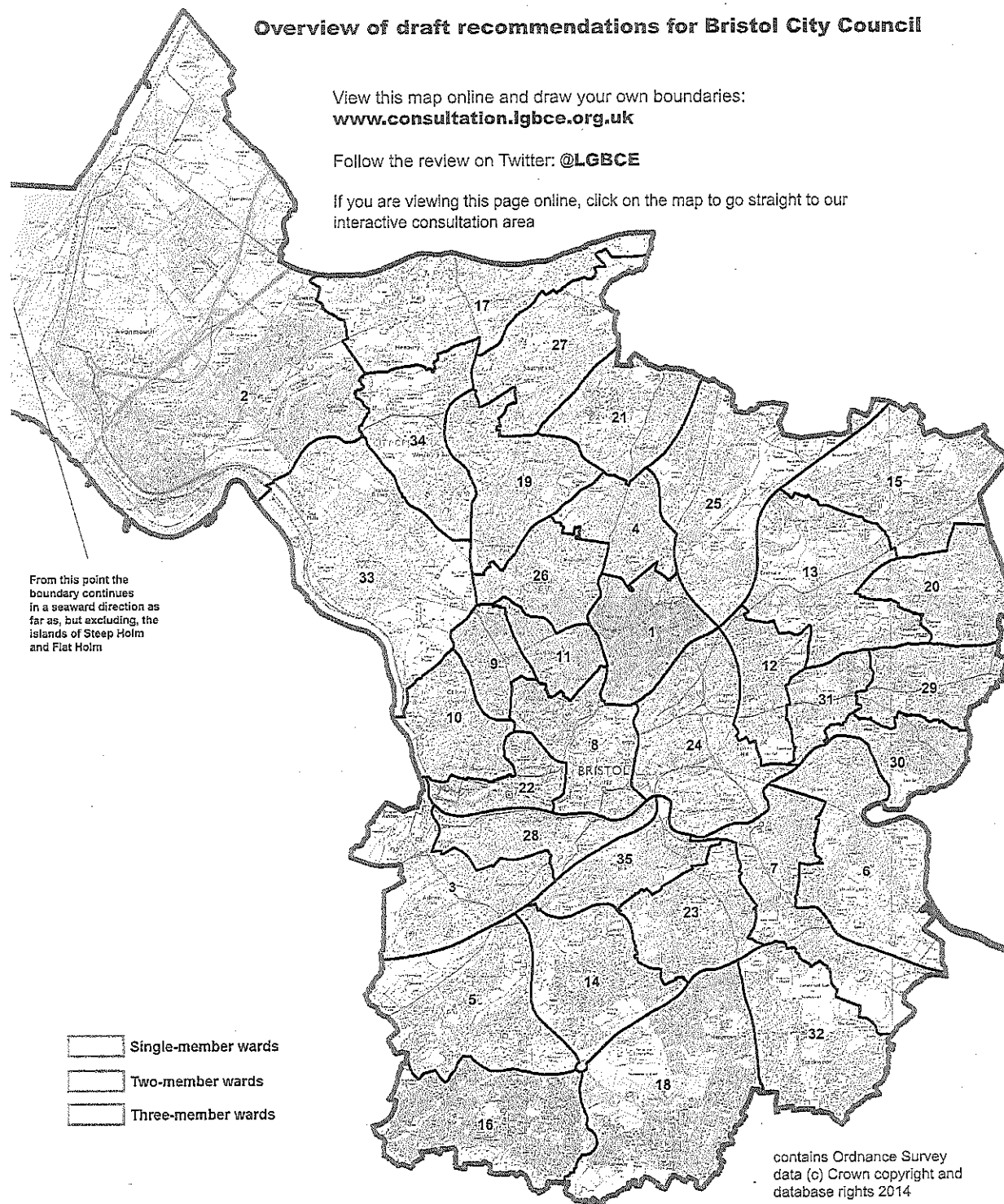
View this map online and draw your own boundaries:
www.consultation.lgbce.org.uk

Follow the review on Twitter: @LGBCE

If you are viewing this page online, click on the map to go straight to our interactive consultation area

From this point the boundary continues in a seaward direction as far as, but excluding, the islands of Steep Holm and Flat Holm

-  Single-member wards
-  Two-member wards
-  Three-member wards



contains Ordnance Survey data (c) Crown copyright and database rights 2014

Map key:

- 1 Ashley & Stokes Croft
- 2 Avonmouth & Lawrence Weston
- 3 Bedminster
- 4 Bishopston
- 5 Bishopsworth
- 6 Brislington East
- 7 Brislington West
- 8 Central
- 9 Clifton East
- 10 Clifton West
- 11 Cotham
- 12 Easton
- 13 Eastville
- 14 Filwood
- 15 Frome Vale
- 16 Hartcliffe
- 17 Henbury & Brentry
- 18 Hengrove & Whitchurch Park
- 19 Henleaze
- 20 Hillfields
- 21 Horfield
- 22 Hotwells & Harbourside
- 23 Knowle
- 24 Lawrence Hill
- 25 Lockleaze
- 26 Redland
- 27 Southmead
- 28 Southville
- 29 St George Central
- 30 St George Troopers Hill
- 31 St George West
- 32 Stockwood
- 33 Stoke Bishop
- 34 Westbury-on-Trym
- 35 Windmill Hill

Summary of our recommendations

We have considered all the submissions we received during the previous phase of consultation.

Our draft recommendations are for four single-member wards, 27 two-member wards and four three-member wards. We consider that our draft recommendations will provide for good electoral equality while reflecting community identities and interests where we have received such evidence during consultation.

You can read the full report and submissions received on our website at www.lgbce.org.uk.

Have your say at www.consultation.lgbce.org.uk:

- view the recommendations down to street level.
- draw your own boundaries online.
- zoom into the areas that interest you most.
- find more guidance on how to have your say.
- read the full report of our recommendations.
- send us your views directly.